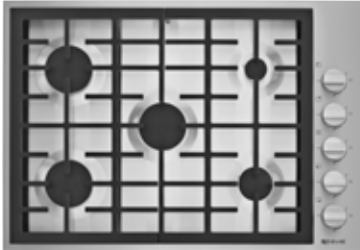


JGC7530B

JENN-AIR® 30", 5-BURNER GAS COOKTOP



SIGNATURE FEATURES

18,000 BTU PowerBurner provides the robust heat necessary for high-powered cooking techniques, whether quickly boiling water, pan searing steaks or stir-frying vegetables. The brass PowerBurner is located on the center front burner.

Simmer Burner provides continuous, low heat for foods and sauces that require exacting temperature control. For delicate tasks like melting chocolate or butter, the Simmer Burner prevents scorching and reduces to as low as 800 BTUs. This 6,000 BTU Burner is located on the right, rear of the cooktop.

Single Point Electronic Ignition and Flame-Sensing™ Re-ignition ensures a continuous flame that reignites automatically when a burner's flame is blown out by a sudden draft. Allows meal preparation to continue uninterrupted and prevents delays in timed recipes.

Low Profile Design allows a minimal look, nearly flush with the countertop. This provides an integrated transition to the cooktop with an exceedingly low profile of only 3 millimeters – less than the thickness of two pennies.

SPECIFICATIONS

- 5 Sealed Burners
- 18,000 BTU PowerBurner
- 15,000 BTU Burner
- 12,000 BTU Burner
- 9,000 BTU Burner
- 6,000 BTU Simmer Burner
- Infinite Burner Control Settings
- Brass Burners
- Single Point Electronic Ignition and Flame-Sensing™ Re-ignition
- 3-Piece, Continuous, Heavy-Duty, Cast Iron Grates
- One-Piece Cooktop
- Euro-Style or Pro-Style® Barrel Knobs
- Stainless Steel Surface
- White LED Burner Indicator
- Low-Profile Design
- Built-in Oven Compatible
- Convertible to LP

STYLE OPTIONS

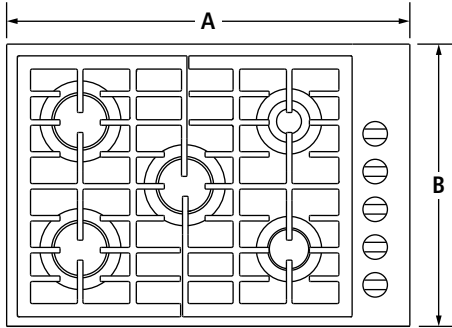
Euro-Style Stainless with Stainless Knobs – JGC7530BS

Pro-Style® Stainless with Pro-Style® Knobs – JGC7530BP

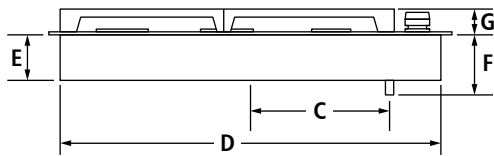
JGC7530B

IMPORTANT: Dimensional specifications are provided for planning purposes only. **Do not make any cutouts based on this information.** Refer to installation instructions packaged with product *before* selecting cabinetry, making cutouts or beginning installation. All Jenn-Air® appliances are appropriately UL, CUL or CSA approved.

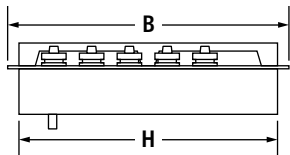
PRODUCT DIMENSIONS



TOP VIEW

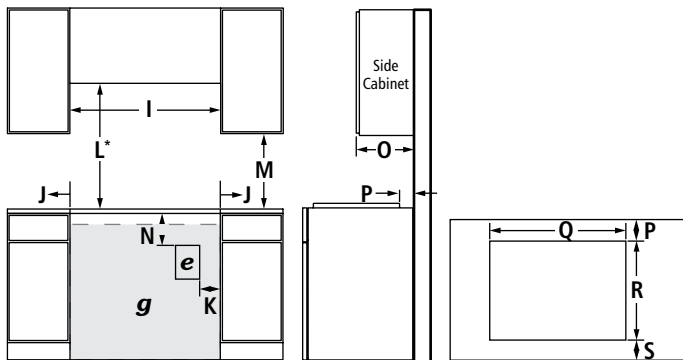


FRONT VIEW



SIDE VIEW

OPENING/CLEARANCE DIMENSIONS



FRONT VIEW

SIDE VIEW

TOP VIEW – CUTOUT

MODEL #		JGC7530B	
		in	cm
PRODUCT DIMENSIONS			
A	Overall width	30	76.2
B	Overall depth	21	53.3
C	Center of cooktop to center of gas inlet	12	30.5
D	Width of recessed cooktop	29¼	74.3
E	Height of recessed cooktop	¾	8.3
F	Height from gas inlet to countertop	5¼	13.3
G	Height with grates	1¼	3.2
H	Depth of recessed cooktop	20¼	51.4
OPENING/CLEARANCE DIMENSIONS			
I	Width of combustible area above cooking surface (min.)	30	76.2
J	Width from cooktop to fixed wall or other combustible material (min.)	6	15.2
K	Width to outer edge of outlet (max.)	24	61.0
L*	Height to bottom of uncovered wood or metal cabinet above cooking surface (min.)	30	76.2
M	Height to bottom of uncovered wood or metal cabinet (min.)	18	45.7
N	Height to top edge of outlet (min.)	5½	14.0
O	Depth of upper cabinet (recommended)	13	33.0
P	Depth from cutout to wall (min.)	2⅞	5.9
Q	Width of cutout	29⅜	74.6
R	Depth of cutout	20⅞	51.8
S	Depth from cutout to front of countertop	2⅞	5.9
e	Recommended electrical access location		
g	Recommended gas supply line location		

*Dimension can be reduced by 6" (15.2 cm) when bottom of wood or metal cabinet is covered by not less than ¼" (0.6 cm) flame retardant millboard covered with not less than No. 28 MSG sheet metal, 0.015" (0.4 mm) stainless steel, 0.024" (0.6 mm) aluminum or 0.020" (0.5 mm) copper.

If installing a hood or microwave hood combination above the cooktop, follow the hood or microwave hood combination instructions for dimensional clearances above the cooking surface.